

**Color Trolley Doppler Ultrasound  
Powerful Echo Ultrasound  
Professional, Intelligent**



Made by Grand  
Medical Group

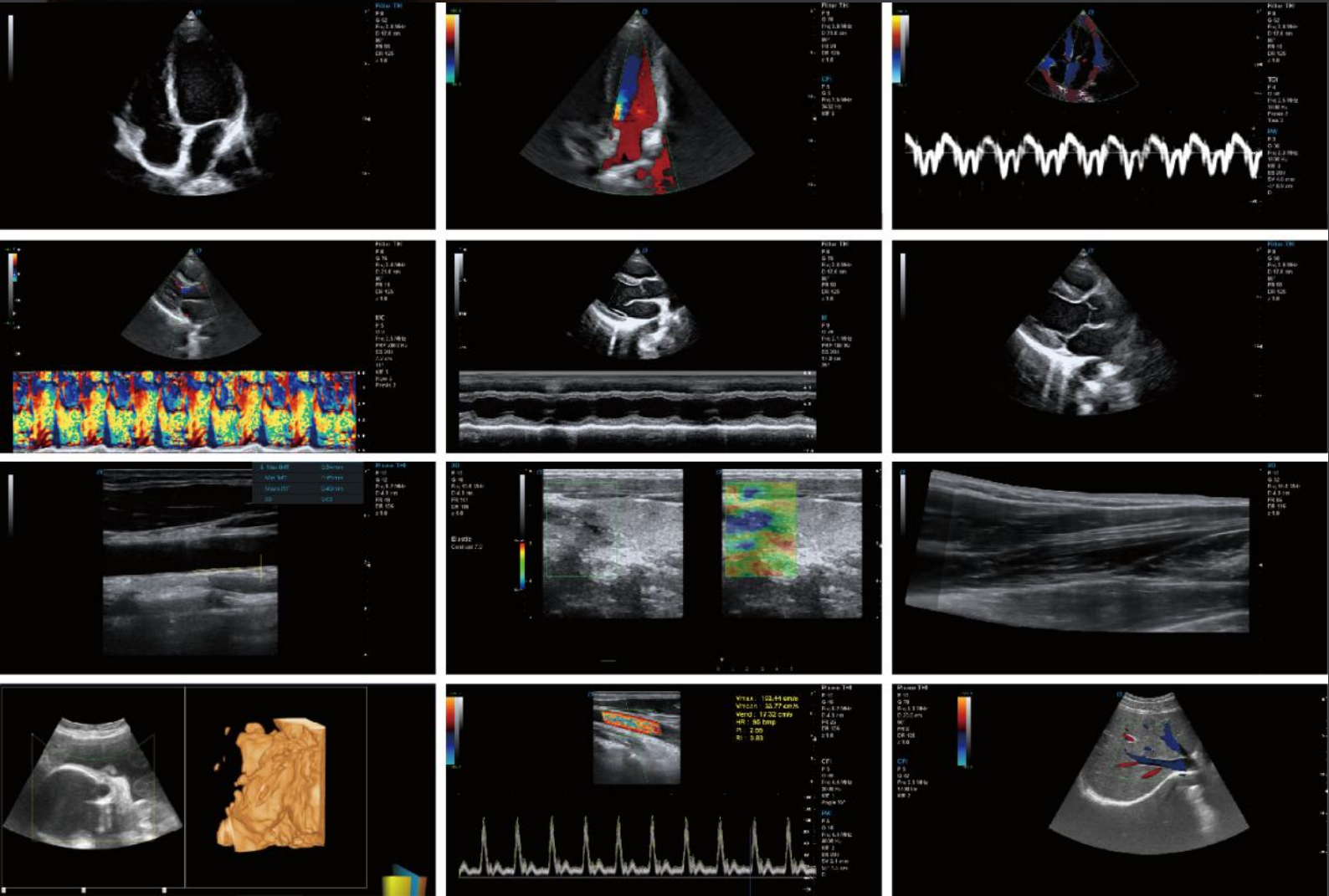


**GC-T8**

**21.5"LED Medicinal Monitor+13.3" touch screen**

**Support:Chinese/English/Spanish/French/Portuguese/Russian/Arabic/Vietnamese**

GC-T8 is configured with a new imaging engine, which can significantly optimize imaging performance. It is a comprehensive imaging system engineered to meet today's most demanding needs, from deep abdominal, vascular to superficial small parts.



## Specifications

- Windows Embedded operation system
- 21.5' LED & free arm design
- Multi-angle adjustable LED screen meets different clinic demands
- 13.3' LED touch screen
- Brings doctors convenient operation and the time of examination is greatly shortened
- Stereo audio system
- Newly designed ergonomic console
- The fully height-adjustable control panel enables optional positioning with just one touch
- Front and rear handles
- Handles on both front and rear make T8 easy to be transported
- 4 Active transducers ports
- Improve your flexibility in moving through a wide range of applications
- 8G RAM, 120G SSD + 1T HDD
- 4 Wheels with locks
- Highly maneuverable, highly mobile four-wheeled platform makes portable exams easy

## Performance

- \* Tissue doppler imaging (TDI)
- \* Auto IMT (Intima-Media Thickness)
- \* Free hand Elastography
- \* 3D/4D imaging
- \* Panoramic imaging
- \* Trapezoid imaging
- \* Anatomic M mode
- \* Auto-Adaptive imaging processing

